

Thanks for downloading...



Legacy Armor Templates



Special Thanks to the following contributors:

A'den Skirata

Ijaat

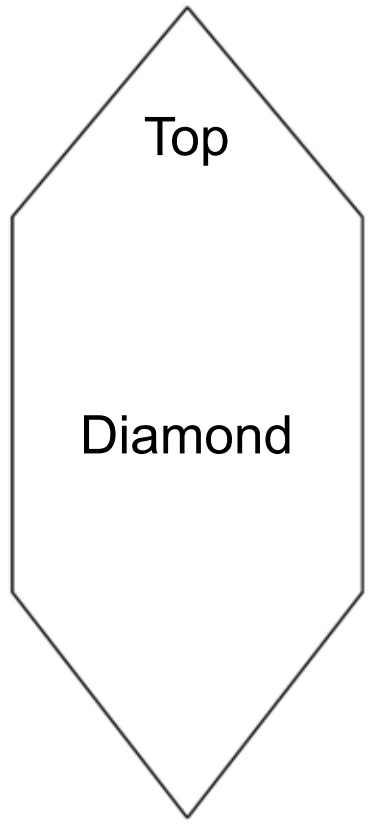
Raltho Valmas

Nik-Lass

Imperial Outpost Armory

Lucious Tavoinne/TR-4126

Top of
Chest Plate



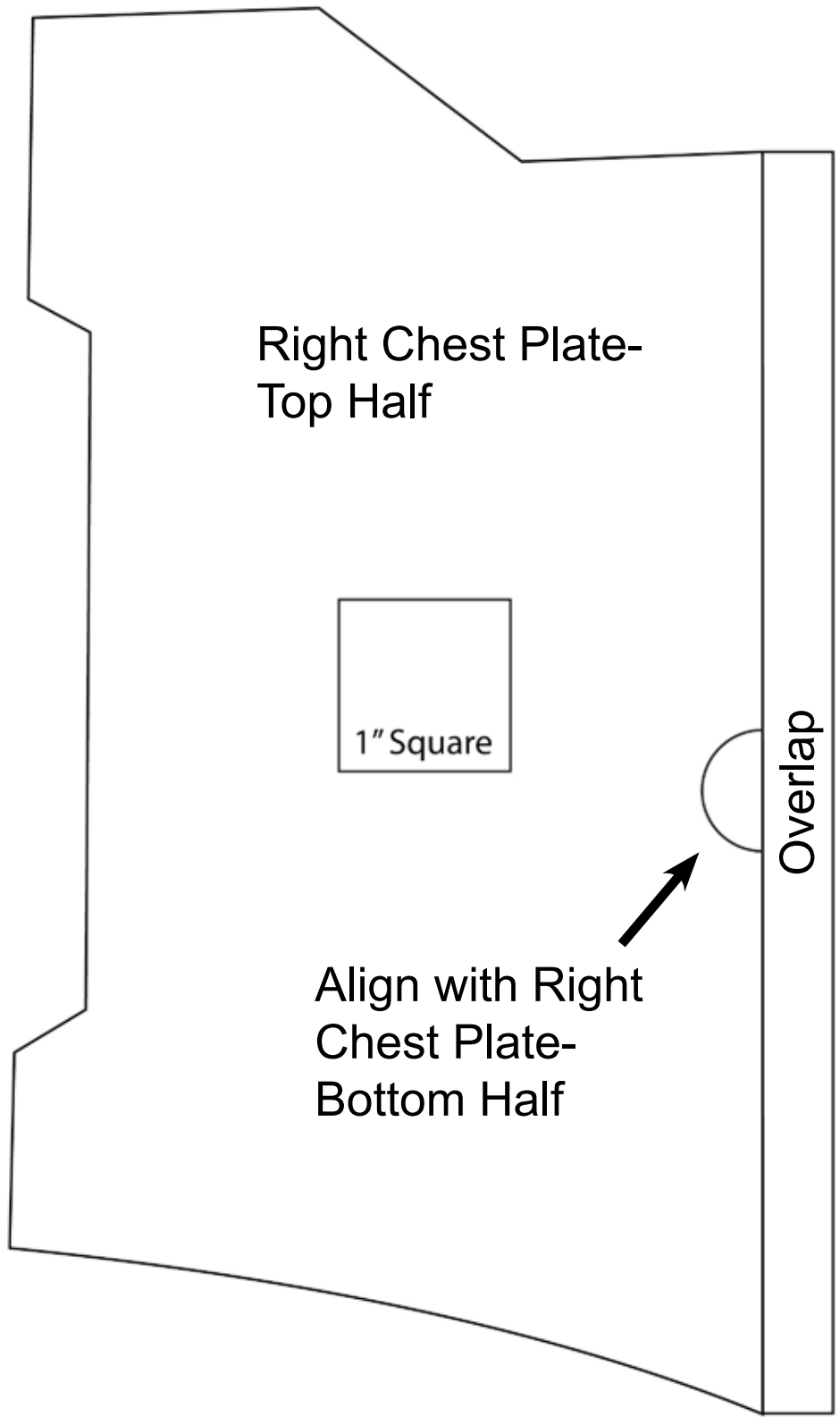
Right Chest Plate-
Top Half

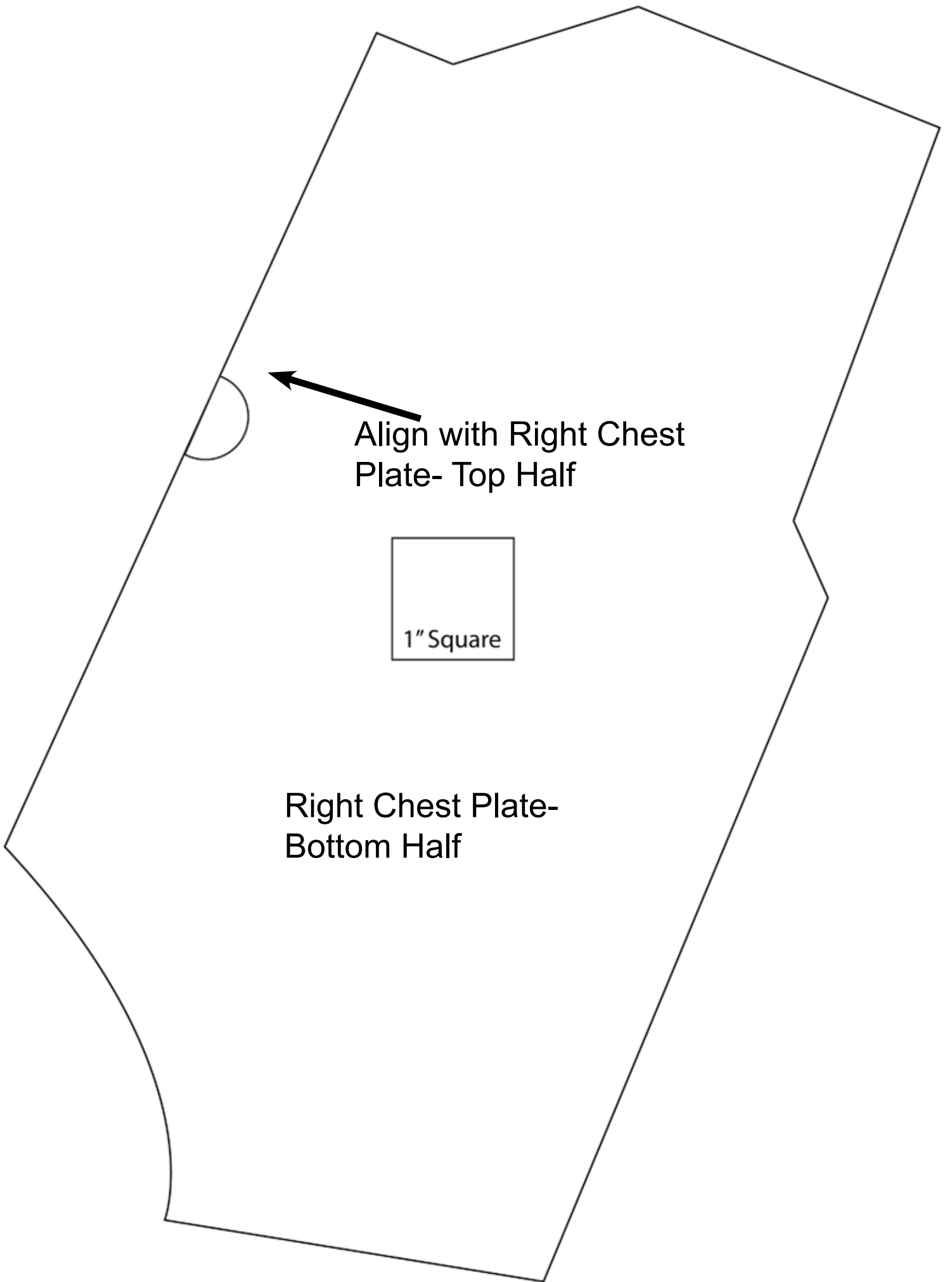


Align with Right
Chest Plate-
Bottom Half



Overlap

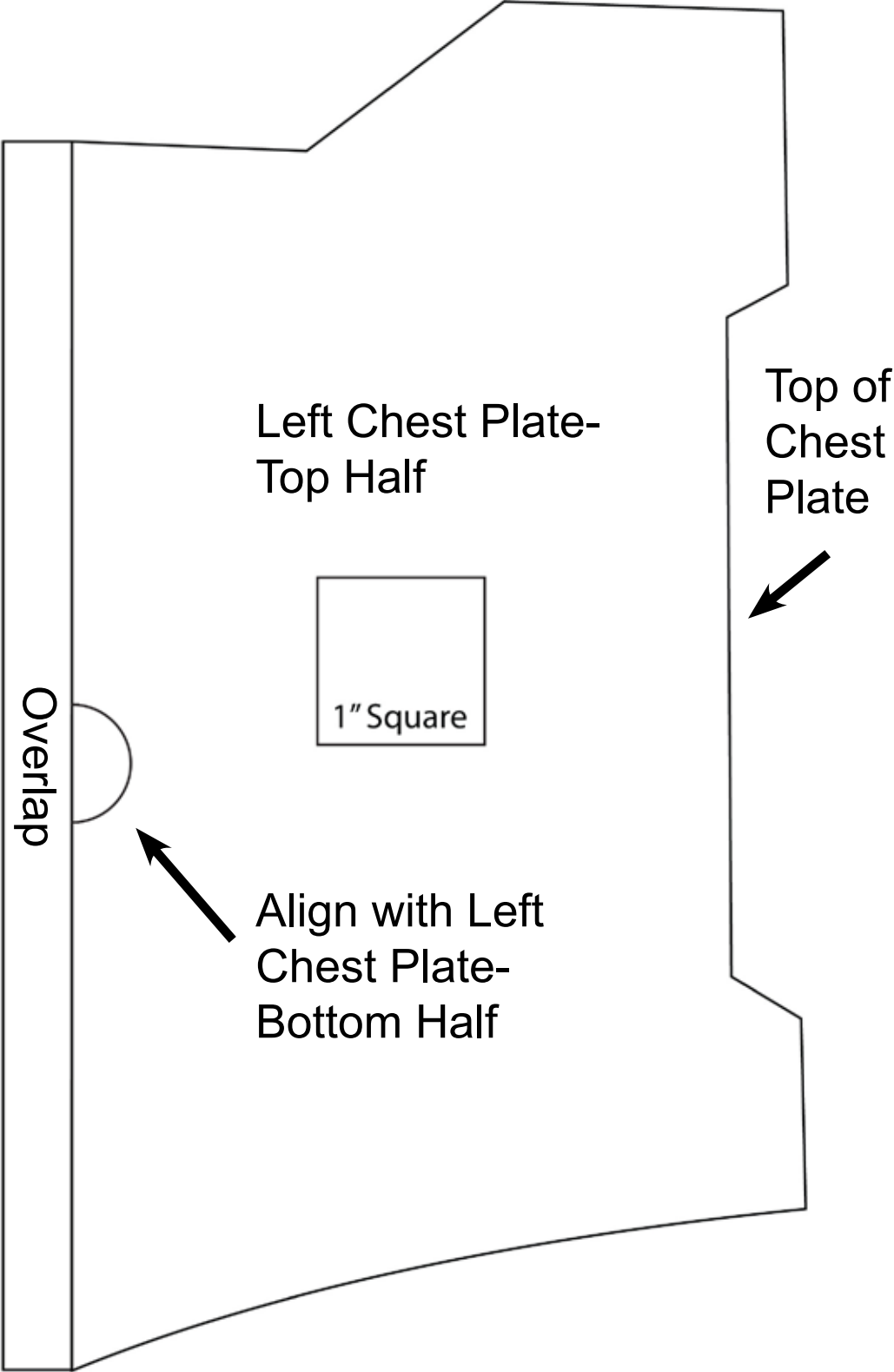




Align with Right Chest
Plate- Top Half



Right Chest Plate-
Bottom Half



Left Chest Plate-
Top Half

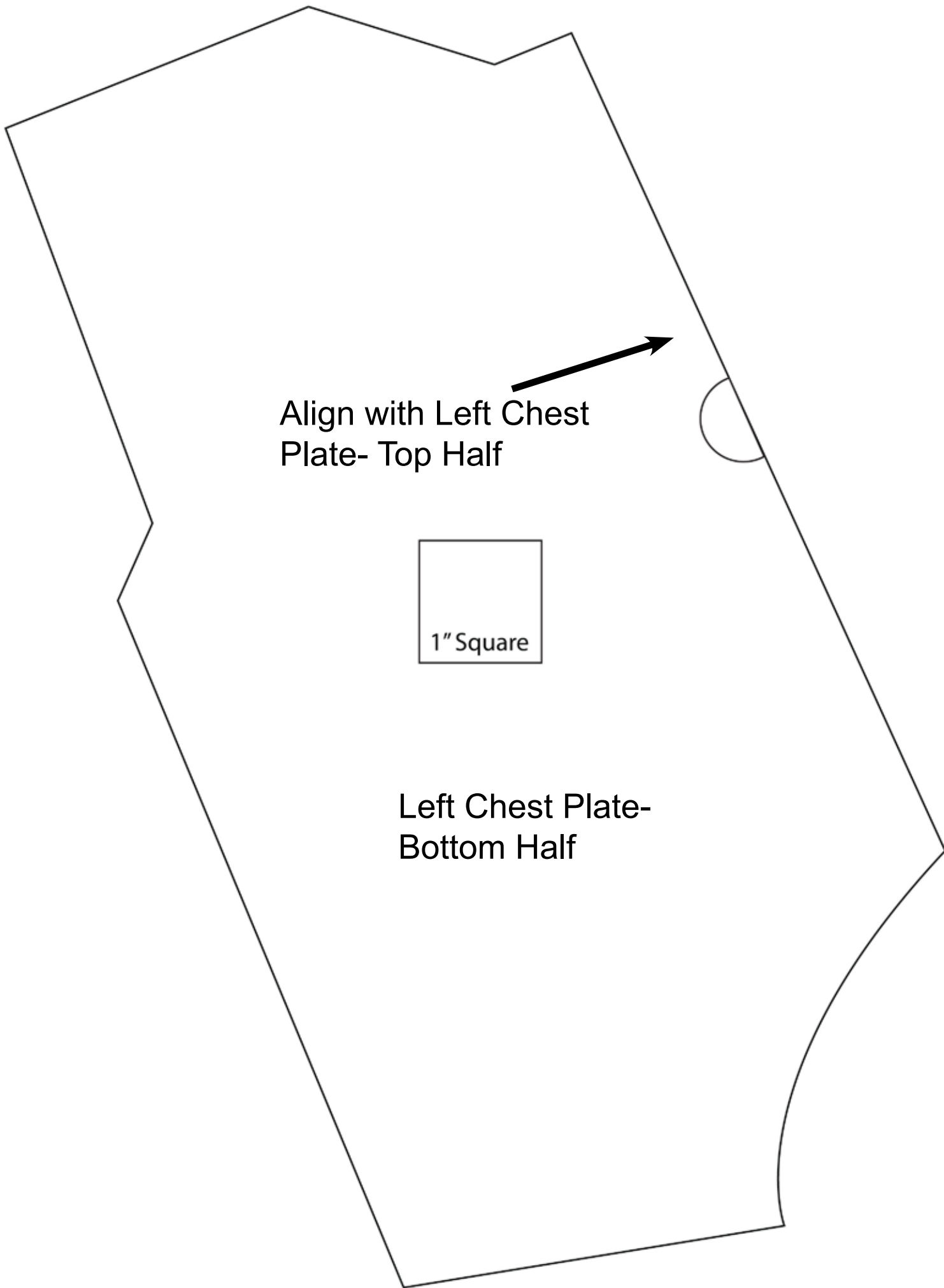
Top of
Chest
Plate

Overlap



1" Square

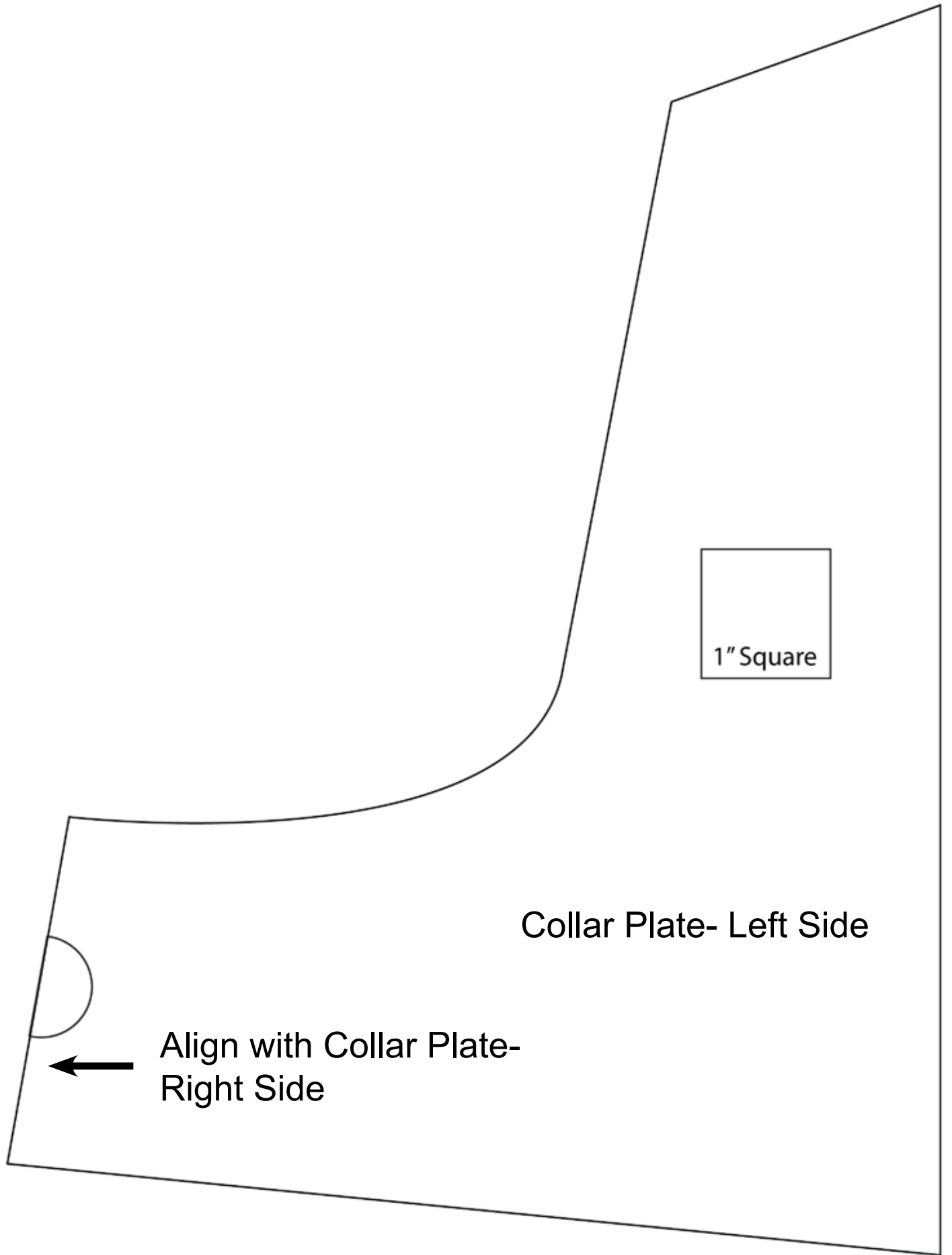
Align with Left
Chest Plate-
Bottom Half



Align with Left Chest
Plate- Top Half

1" Square

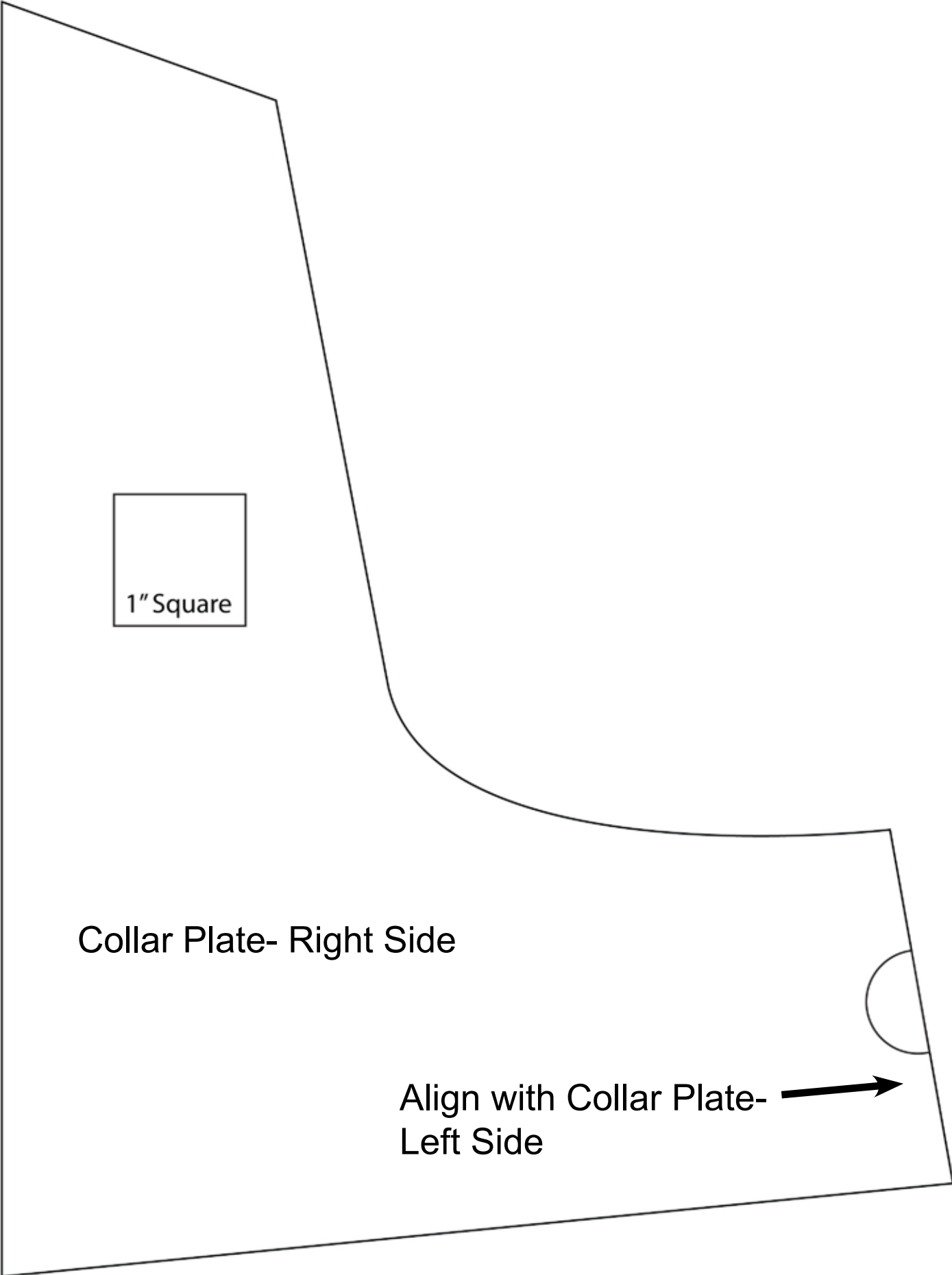
Left Chest Plate-
Bottom Half



Collar Plate- Left Side



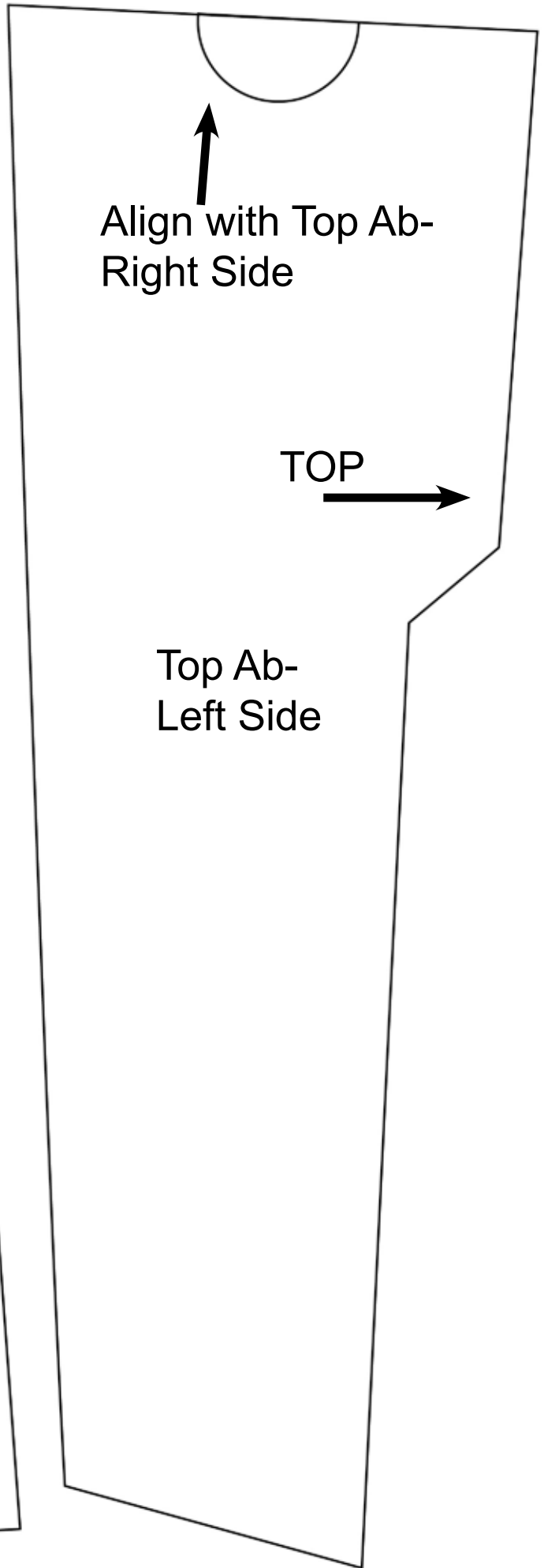
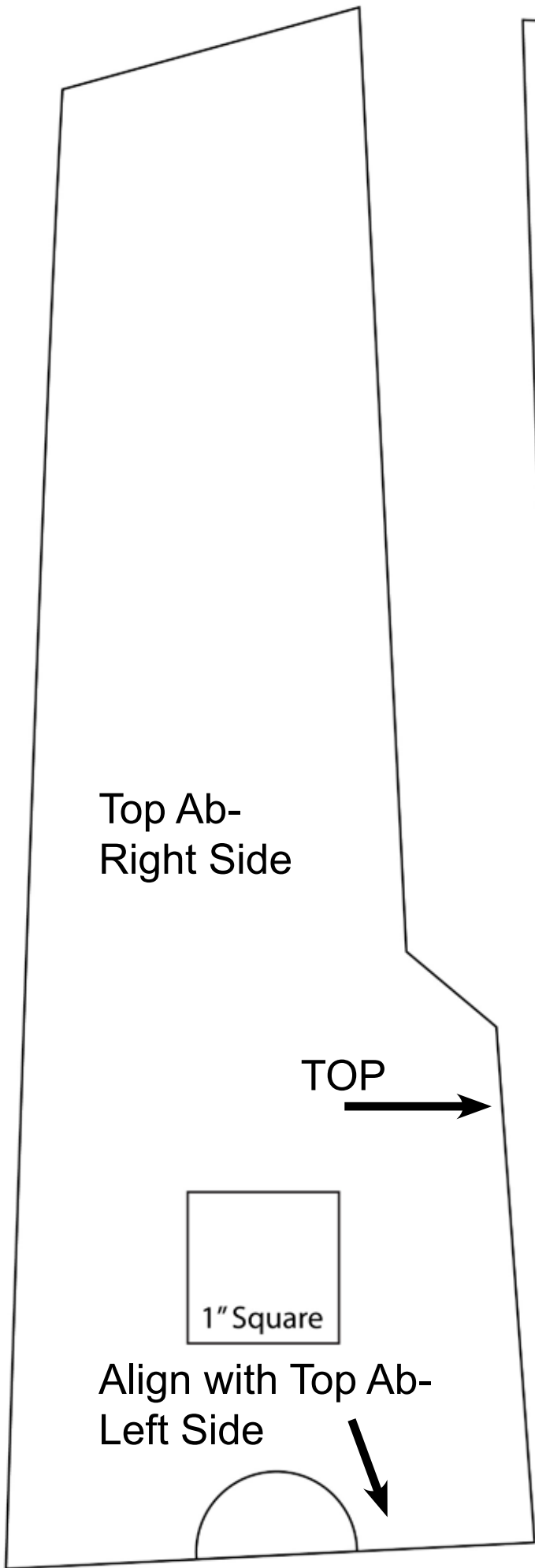
Align with Collar Plate- Right Side

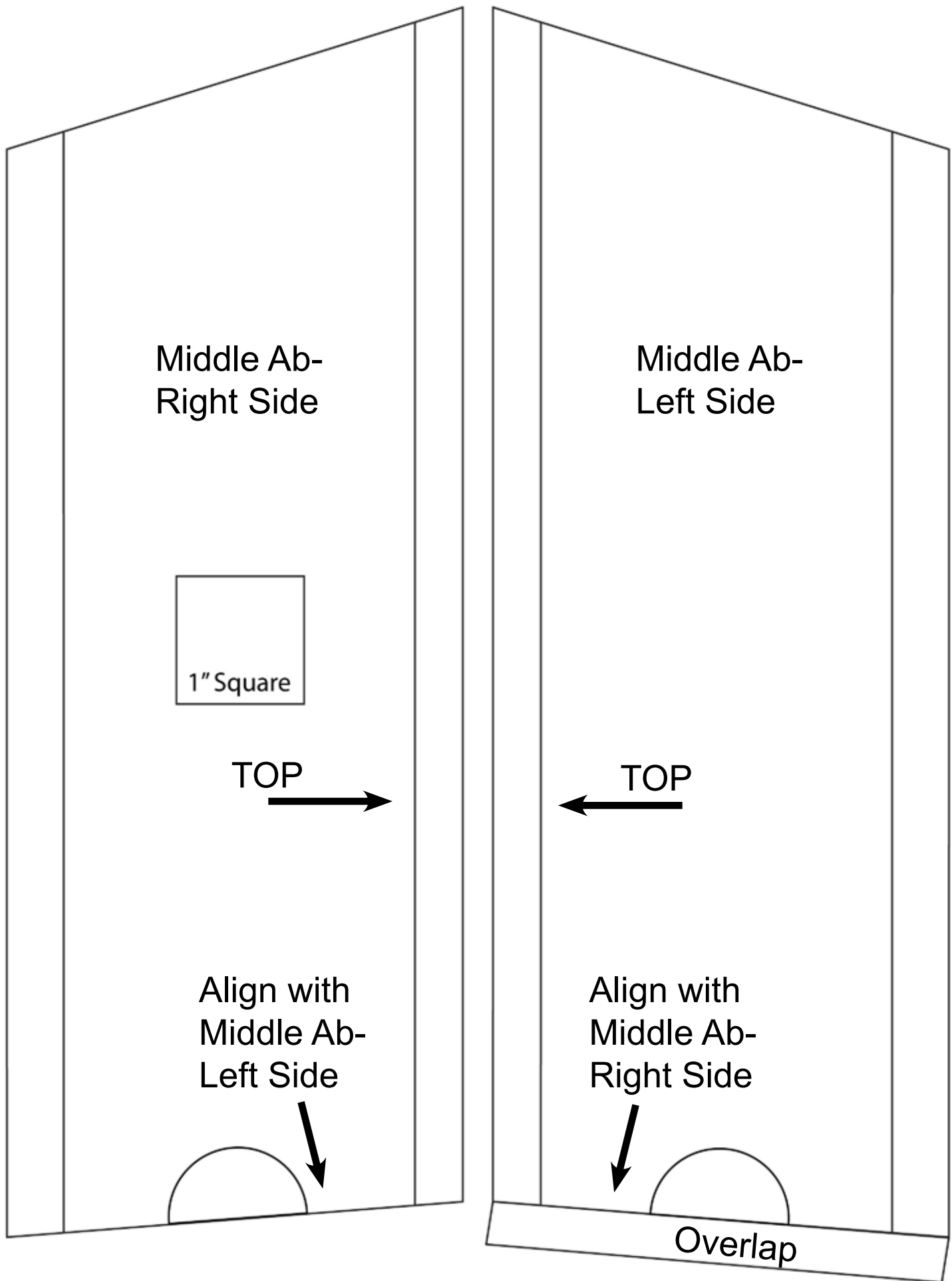


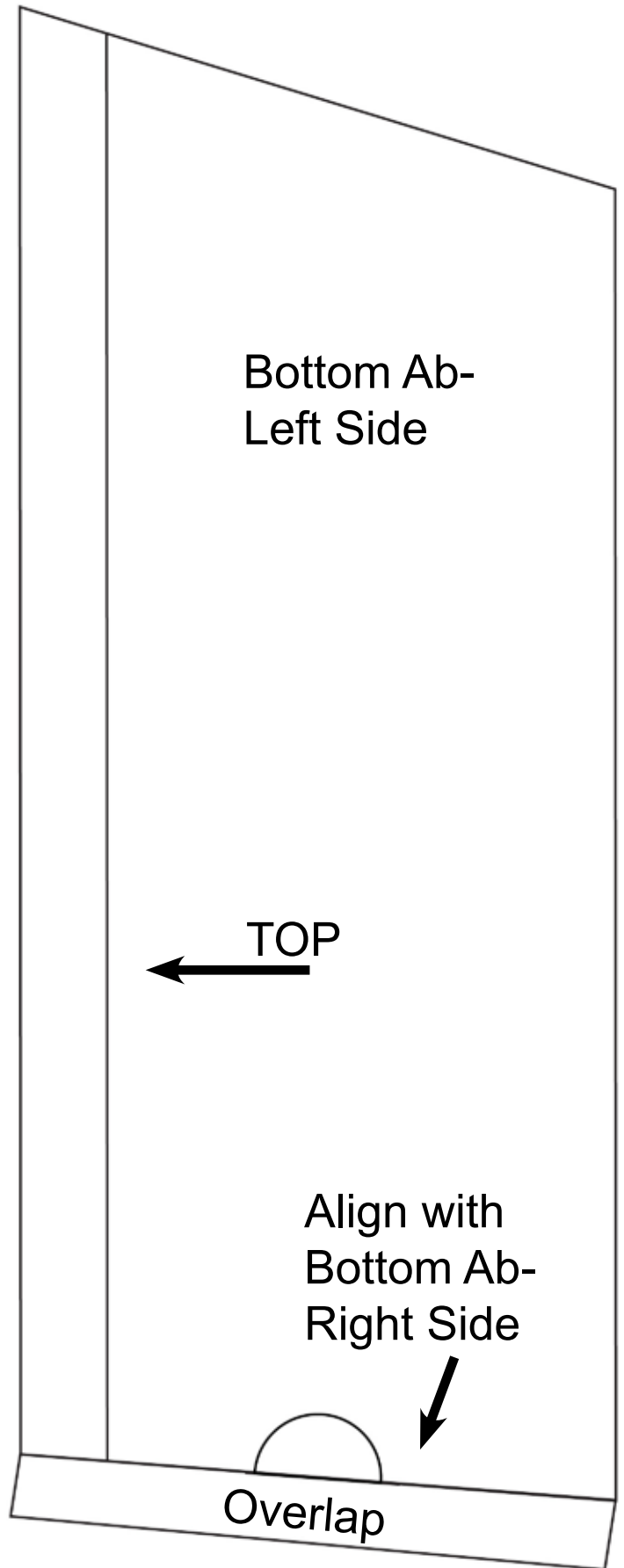
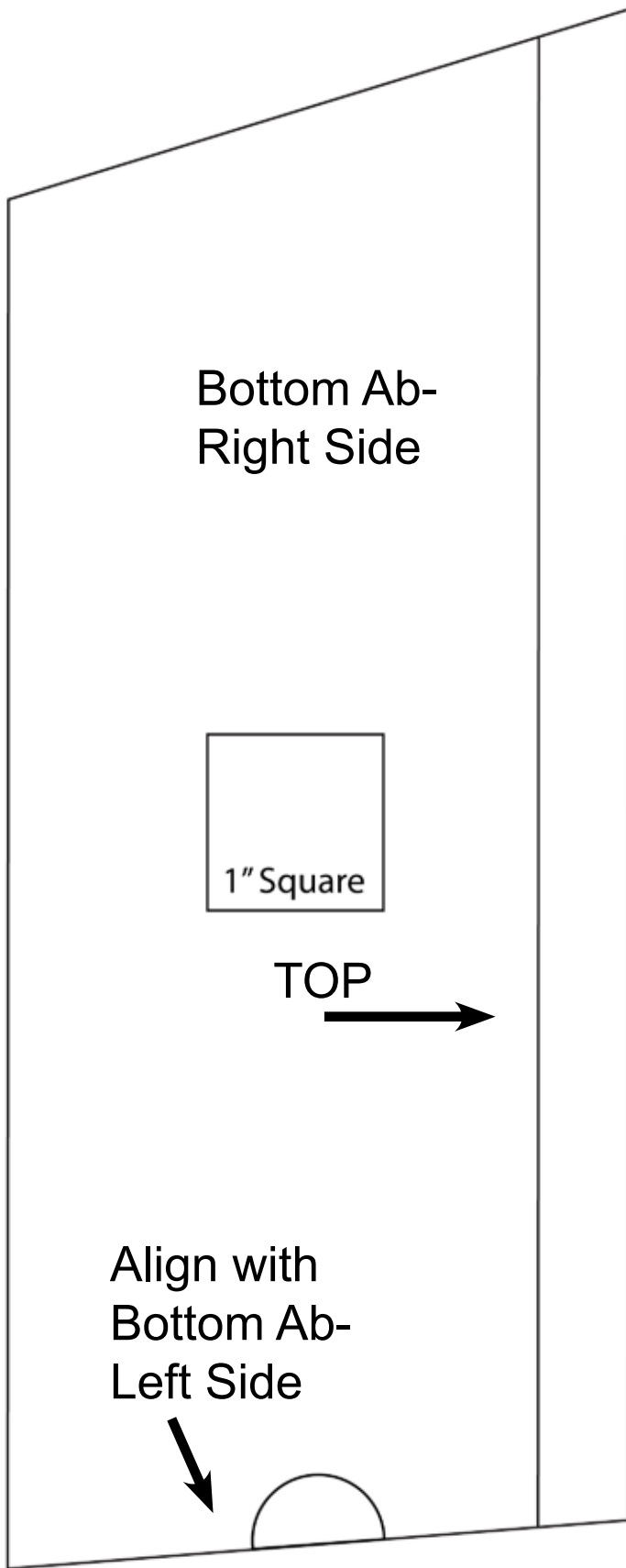
1" Square

Collar Plate- Right Side

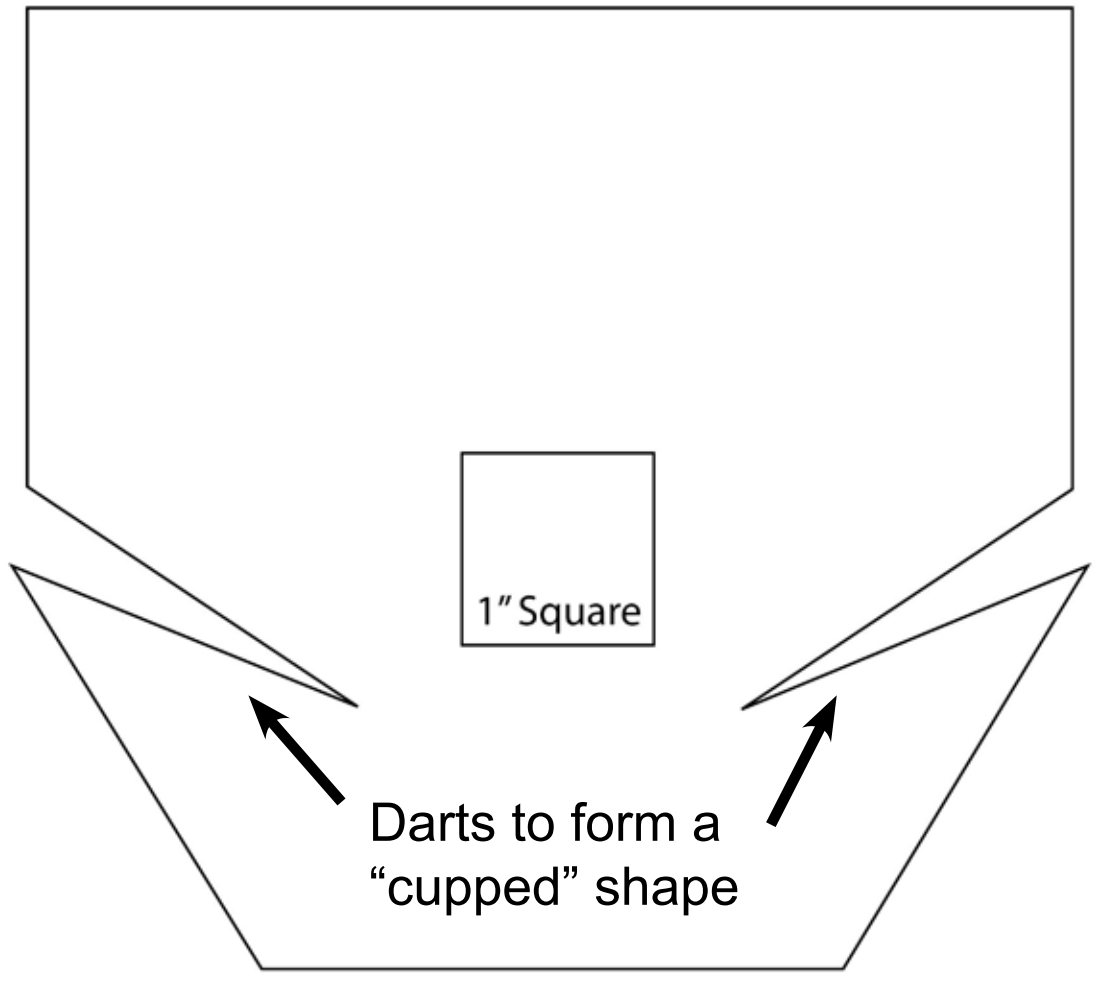
Align with Collar Plate-  Left Side



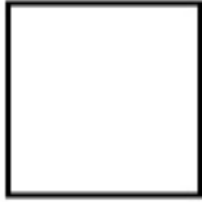




Knee Plate
Print 2



Print 2



1" Square

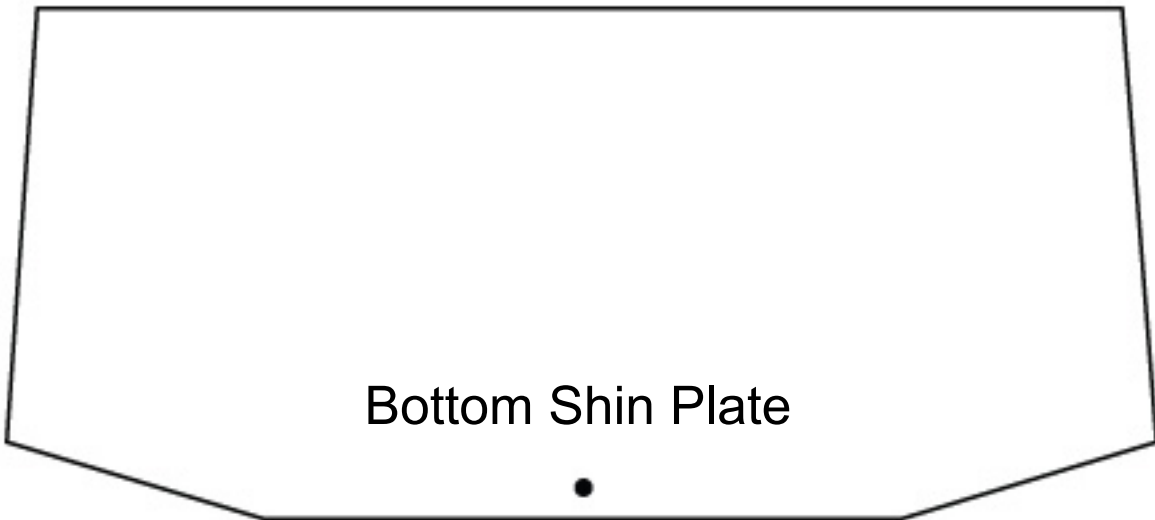
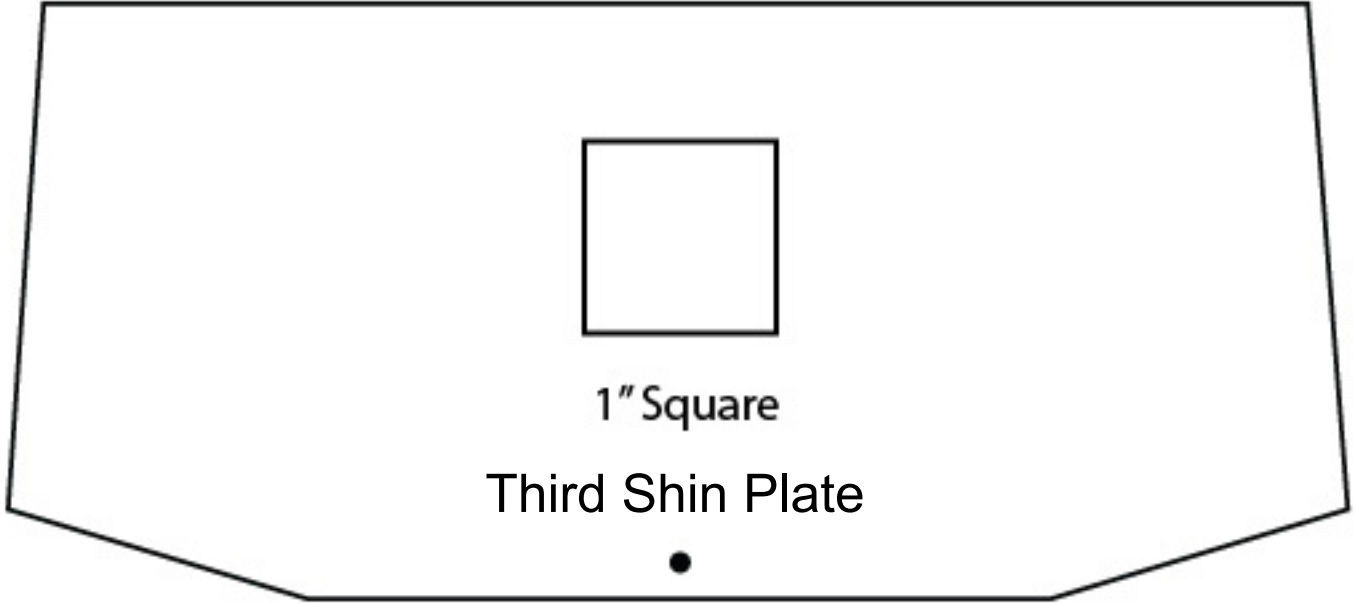
Top Shin Plate



Second Shin Plate



Print 2



Additional Notes

1. The middle and bottom ab plates have lines running vertically with the piece. This is to indicate where the actual plates will overlap.
2. The half circles indicate the edge where the templates must be taped together to form the full template.
3. The shin plates are made to overlap each other by about a 1/2", starting with the top plate, then the second plate underneath the top, the third underneath the second, and the bottom plate underneath the third.